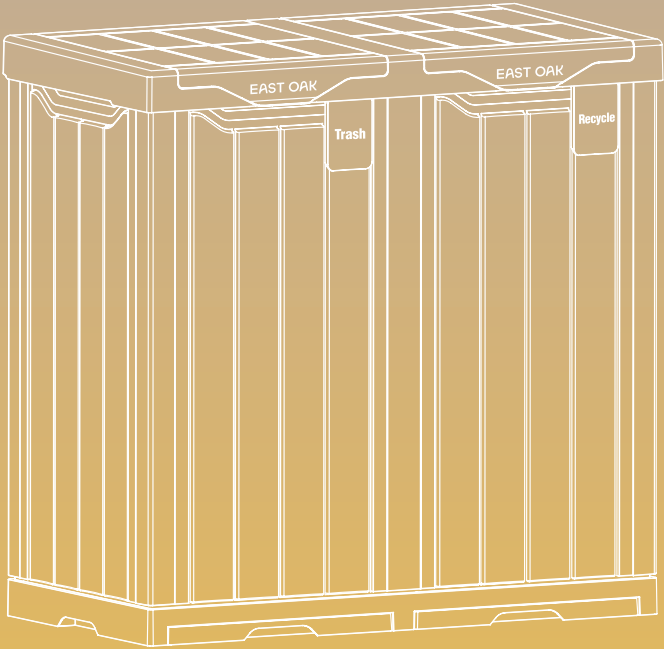


Trash Can 62 Gal Owner's Manual

MODEL:
DC62GY2



EAST OAK

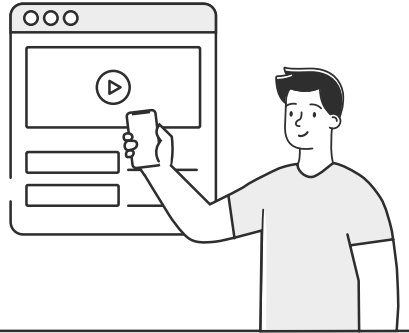


Need help starting?

Scan the QR code for installation video guidance.



installation video



Questions? Comments?

Reach out to us for expert support!

✉ support@eastoak.com

🌐 eastoak.com

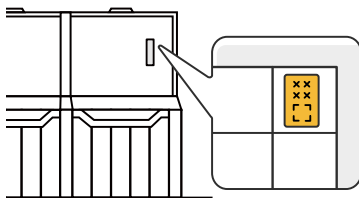
☎ 1-833-EAST-OAK (USA)

(9am-5pm PST/PDT)



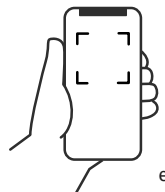
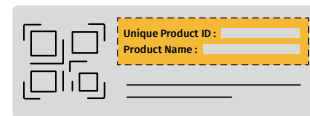
Unlock all the perks!

Start the registration process now for a 3-year warranty.



Step 1:

Found the Unique Product ID on the product.



eastoak.com/warranty

Step 2:

Scan the QR code within 90 days to access our registration page. Fill the Unique Product ID and other required information as instructed.

Complete the registration !



Welcome to the East Oak family!

Stay updated with our latest news and exclusive discounts by following us on social media!



Facebook @eastoakliving
www.facebook.com/eastoakliving



Instagram @eastoakliving
www.instagram.com/eastoakliving/



Youtube @eastoakliving2080
www.youtube.com/@eastoakliving2080

IMPORTANT CAUTION

Once installed, the product cannot be detached. Please strictly follow each step in the installation manual.

- Please check all parts and components to ensure that there are no damages or missing items before starting the construction of the product. If you have any problems or discover any missing parts, please contact customer service at support@eastoak.com
- Some parts may contain sharp edges. Wear protective gloves if necessary during assembly.

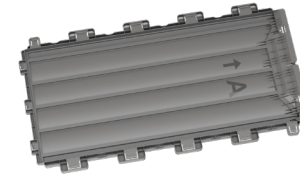
ASSEMBLY INSTRUCTIONS

- DO NOT assemble this item alone for your safety. Two people are necessary for smooth and safe installation.
- Item identification: For ease of identification, all parts are labeled to correspond to the step number in which the part is used.

CARE & SAFETY

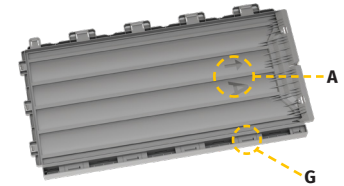
- Check all panels for tightness before usage.
- It is of utmost importance to assemble all parts according to the directions. Do not skip any step.
- In case of fire, do not attempt to extinguish any burning polypropylene with water.
- Using a stiff brush or abrasive cleaner could damage the box.
- After rain, wipe the box with cloth before opening.
- Do not stand on the lid.
- To prevent the risk of suffocation, do not allow children to play inside the box.
- Exercise caution when moving fully loaded product. This product is not intended for transporting heavy objects.

PARTS LIST



Front Side Board

A X 2PCS



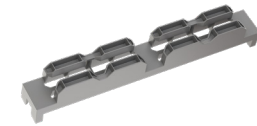
Rear Side Board

A+G X 4PCS



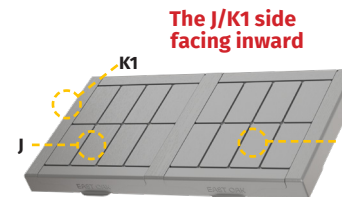
Connection Buckling Strip

M X 2PCS



Internal Reinforcing Rib

P X 1PC



Upper Cover Board

J+K1 X 1PC



Movable Cleaning Tray and Base

C+D1 X 1PC

PARTS LIST



Plastic Hinge
B X 4PCS



Screw
G X 4PCS



Rubber Plug
E X 8PCS



Garbage Sorting Board
F X 2PCS

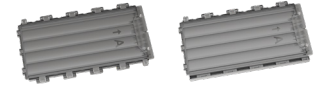
WHAT'S IN THE BOX

- 8 x Trash Can Assemblies
- 1 x Internal Reinforcing Rib
- 2 x Connection Buckling Strip
- 2 x Garbage Sorting Board
- 4 x Plastic Hinge
- 4 x Screw
- 8 x Rubber Plug
- User Manual

1 ASSEMBLY INSTRUCTIONS

Connect the front side board (A) and rear side board (A+G) using the Connection Buckling Strip (M).

Attention: Keep the letters and the arrows in the same direction.

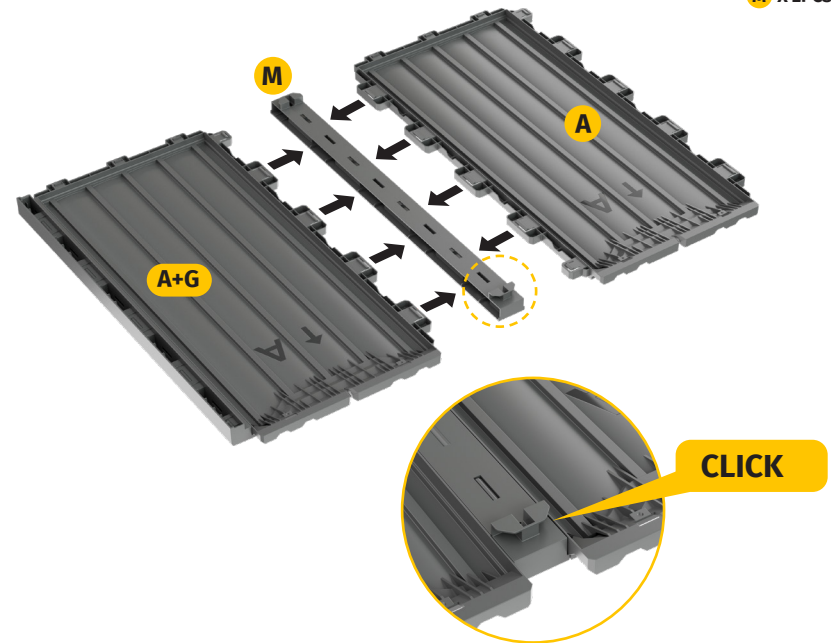


A X 2PCS

A+G X 2PCS



M X 2PCS



x2

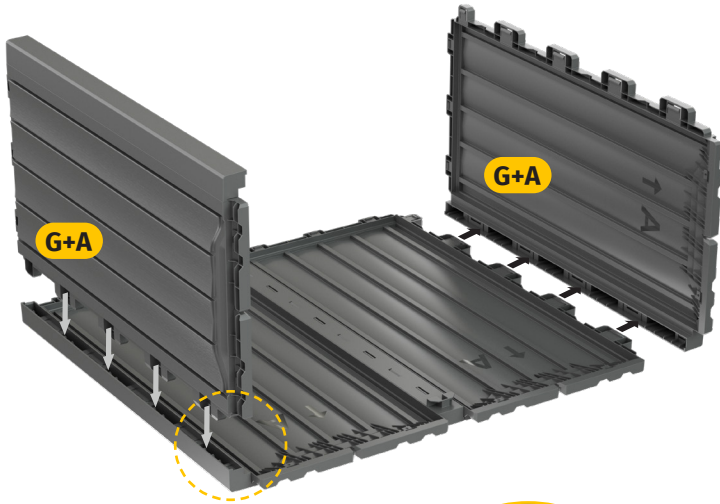
2

Place the assembled panels flat on the ground respectively. Difference between G+A and A board: G is installed on different sides of A.

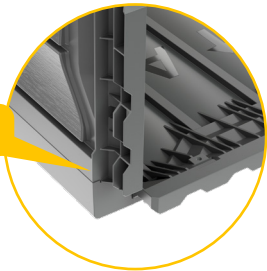
Attention: Keep the letters and the arrows in the same direction.



A+G X 2PCS

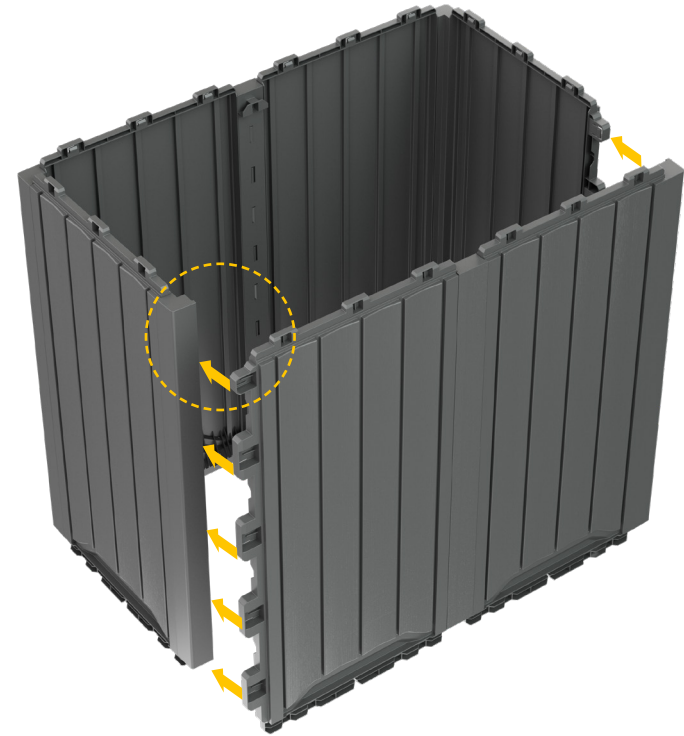


CLICK

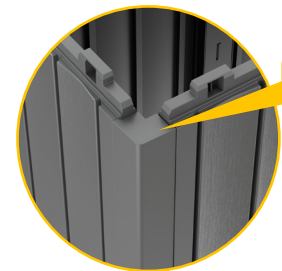


3

Installation of front side board: Keep the letters and the arrows in the same direction, and buckle with the connection strip.



CLICK

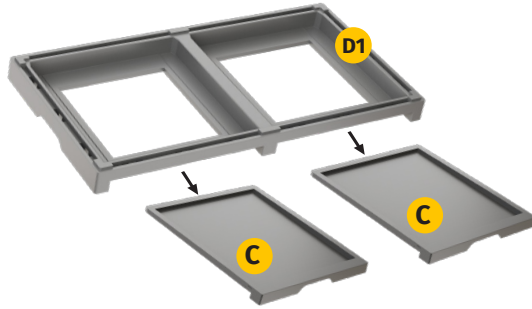


4

First pull out the board(C), then align board (D1) with the hole and install it vertically. Install the base. Pay attention to aligning the direction of the arrows with the buckle position.

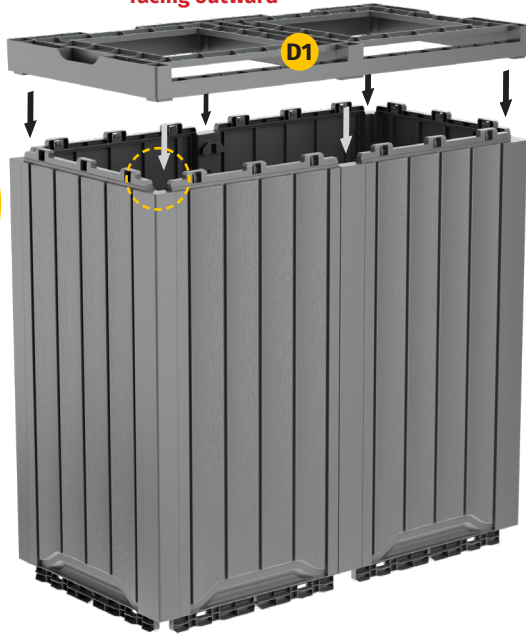
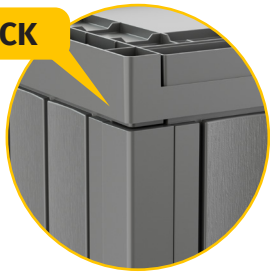


C+D1 X 1PC



The D1 side facing outward

CLICK

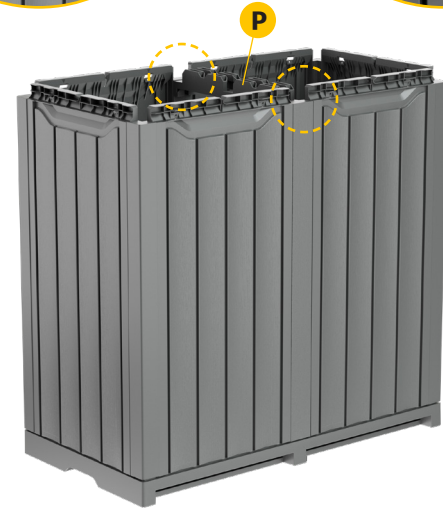
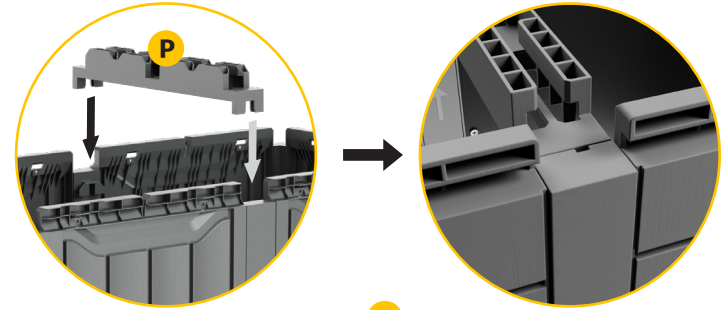


5

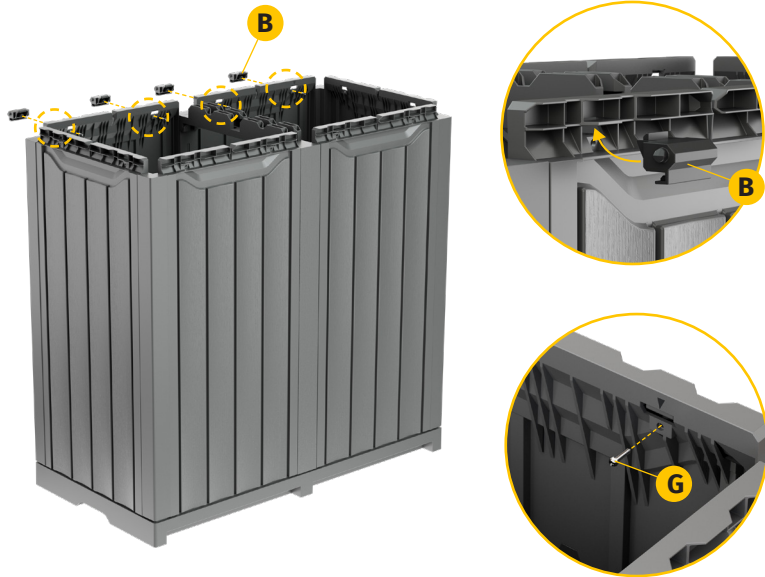
Installation of internal reinforced partition strip(P).



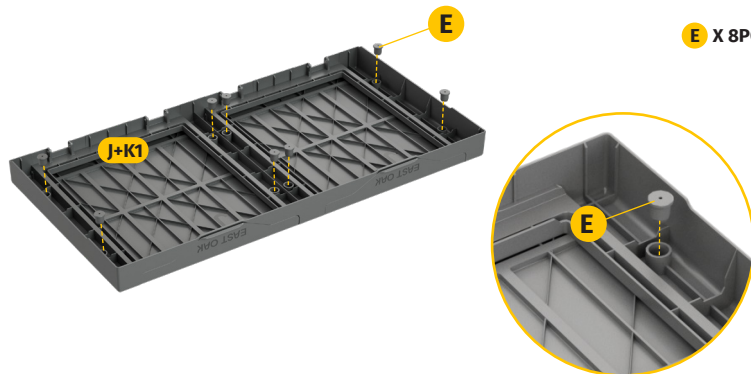
P X 1PC



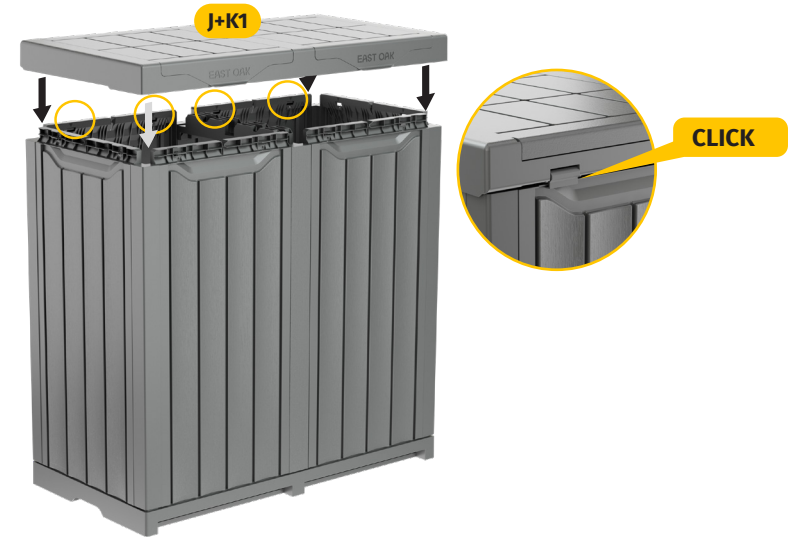
6 Install the Plastic Hinge(B) onto the panel opposite the opening of the Base with four screws(G).



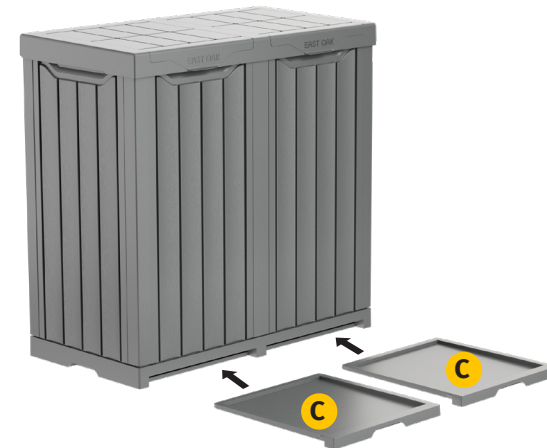
7 Install the eight Rubber Plugs(D) onto the Upper Cover Board(J+K).



8 Installation of upper cover board: Align the buckling point of the upper cover board with the slot of the rear side board and then buckle it in.



9 Push them in with the letters downward.



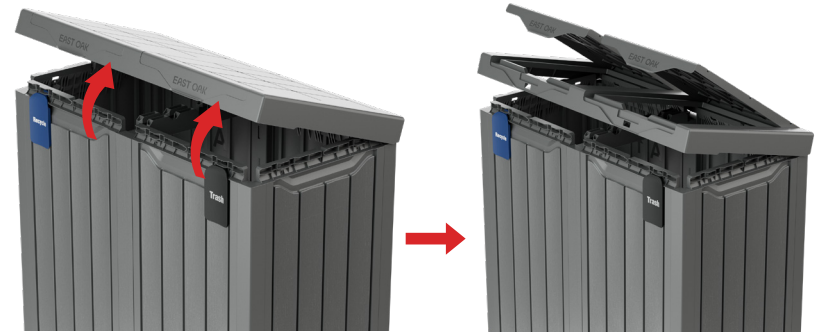
10 Install the Garbage Sorting Board(F) according to your needs.



11 Installation completed.
Before you open it, you need to pull the buckling lock upward slightly with your finger.




1 **HOW TO SECURE TRASH BAGS**
Open the inner lid of the trash can.



2 Put on the trash bags.



 **TIPS:** If the garbage bag is too full, you can remove the Internal Reinforcing Rib (P).

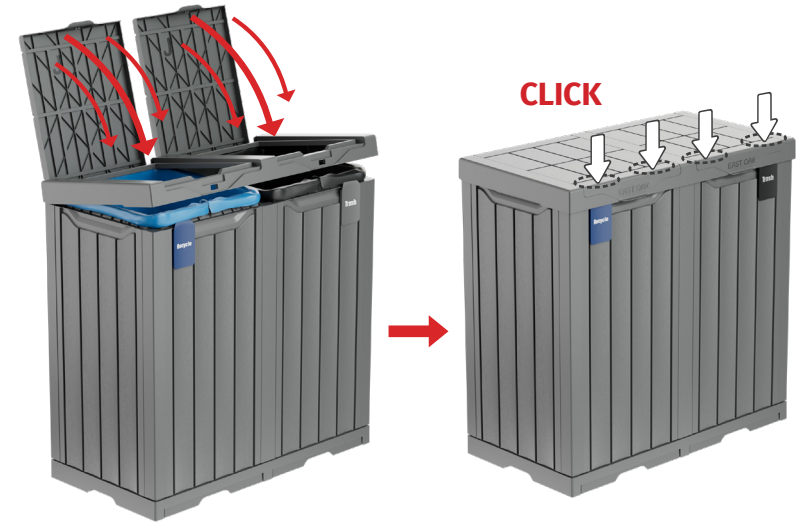
3

Organize the excess part of the trash bags.



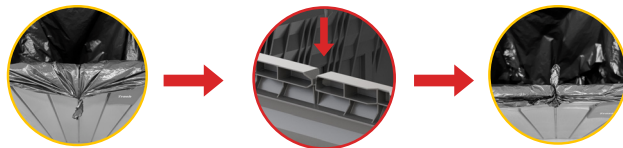
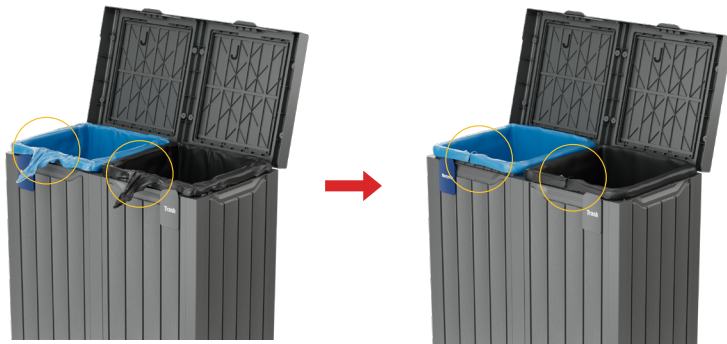
5

Cover the inner and outer lids. Press the lid with your hand until you hear a **click** to make sure it is tight.



4

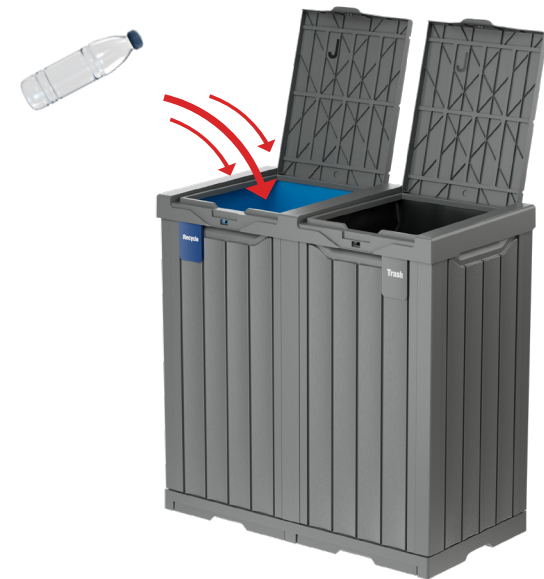
Secure the excess into the groove and pull inward tightly.



secure it in the groove

6

Open the outer lid for daily use.



FEATURES

- UV and Fade Resistance
- Durable and Long-lasting Use
- Easy to Assemble
- Marine-grade Quality Hardware
- Comfortable Side Handles
- Upgraded PP Material to Prevent Bending and Fading

WARRANTY POLICY

GUARANTEED 3-YEAR WARRANTY

Thank you for choosing East Oak. This product is covered by our company warranty for up to 3 years from its original purchase date.

CLAIM WARRANTY

If you'd like to claim your product's warranty, register your new product on our website at www.eastoak.com/warranty.

WARNING

Cancer and Reproductive Harm
www.P65Warnings.ca.gov.

EAST OAK

✉ support@eastoak.com

🌐 eastoak.com

☎ 1-833-EAST-OAK (USA)